

OFFICIAL EVENT GUIDE



RETRO magic™

PRESENTED BY
LAKE BUEANA VISTA HISTORICAL SOCIETY

Sept 30 – Oct 1, 2023

Yacht Club Convention Center

RetroMagic EPCOT 40: Day 1 Saturday, September 30

6:30p - RetroMagic EPCOT 40 -Welcome

The LBVHistory Board of Directors welcome you to RetroMagic with an opening film and presentation.

6:45p - DisneyDocs.net

Learn about **Ted Linhart**'s rare EPCOT documents and pamphlets that you can see first hand on display in the Centorium. Follow @TedOnTV on Twitter.

7:00p - Using Your Head: Cranium Command

From storyboarding & casting to model building and filming, hear the first hand story of how Cranium Command changed course when **Jerry Rees** took the helm. Actor **Scott Curtis** gives us a look at what it was like playing Bobby in the attraction. A not-to-miss session with *many, many surprises along the way!*

8:25p - Day 1 Wrap Up

It's pretty much as I expected, but from what I've been reading, not as futuristic as Walt Disney expected.

— **David Contreni**, who changed his wedding date so he could honeymoon during the Epcot opening

RetroMagic EPCOT 40: Day 2 Sunday, October 1st

8:00a - 9:30a - Buffet Breakfast Service

Includes Assorted Juices, Fresh Brewed Coffee, Fresh Brewed Decaffeinated Coffee, and Selection of Teas. Seasonal Fresh-cut Fruit, Cage-free Scrambled Eggs, Mickey Waffles with Maple Syrup, Seasonal Berries, and Whipped Cream. Steel-cut Oatmeal cooked with Coconut Milk, Cinnamon, and Honey, served with Brown Sugar and Dried Fruits. Smoked Bacon, Roasted Potatoes with Peppers and Onions

9:00a - We've Just Begun To Dream

Tammy Tuckey & Billy Flanigan open Day Two with a musical number as we celebrate EPCOT Center's 41st Birthday!

9:10a - We Can Do It! Building EPCOT Center

Take an in depth and technical look at the challenges that Imagineers faced when designing, planning and building EPCOT Center. Disney Legend **Bob Gurr** and Imagineers **Steve Alcorn** and **Bob Holland** dig deep into the muck of building EPCOT.

10:10a - Modeling EPCOT Center

Fan favorite Imagineer **Jim Sarno** is back to recount his modeling experience on a variety of attractions. SMRT-1, Listen to the Land, Wonders of Life, Journey into Imagination and the Land fountain are just some of his many projects!

10:30a - 11:00a - Break

An opportunity to visit The Centorium for photos, autographs, book signings, etc.

11:00a - There's No Place like World Showcase

The spectacle that is World Showcase is often overlooked; but we're taking a dive into the research, construction and development of the original pavilions. And just what did "*βΦθΙΨ is a Mama's Boy*" mean? Come find out! **Hugh Darley** fills in the blanks.

11:30a - It's Fun to Be Free: World of Motion

With 188 of the 406 animatronics in Future World, World of Motion is a lost attraction that deserves more recognition. **David Feiten** and **Tad Stones** take us through the ride pointing out what made this the final masterpiece from legendary Imagineers.

12:10p - 1:45p - Lunch Break

Enjoy lunch on your own at a nearby dining venue in the resorts around the Boardwalk and Crescent Lake or, for those with park admission, take advantage of International Gateway and dine in World Showcase.

1:45p - Grand and Miraculous: Spaceship Earth

You'll want to thank more than the Phoenicians after this jam-packed panel describing every detail of Spaceship Earth from start to finish. Imagineers **Peggie Farris**, **Richard Vaughn**, and **John DeCuir Jr.** share terrific stories about EPCOT's park icon.

2:35p - Tomorrow's Child

Tammy Tuckey discusses the story behind the Spaceship Earth song "Tomorrow's Child" with singer **Sally Stevens** before performing the iconic song live.

2:45p - 3:05p - Break

An opportunity to visit The Centorium for photos, autographs, book signings, etc.

3:05p - Choose Your Own Adventure: Horizons

Imagineer and modeler **Trevor Bryant** takes you through the history of Horizons including model making and set manufacturing; featuring never before seen photos of the attraction and construction!

3:45p - Horizons: Revisited

Take the trip you've always imagined, again! LBVHistory presents its re-mastered ride-through of Horizons including all 3 endings!

4:05p - 4:25p - Break

An opportunity to visit The Centorium for photos, autographs, book signings, etc.

4:25p - Journey Into Imagination: Revisited

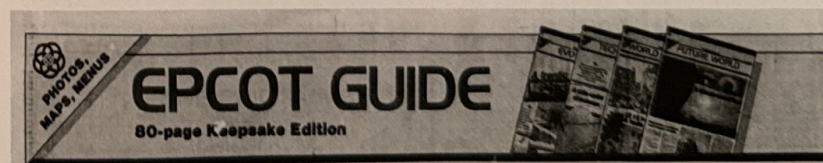
Step back in time and relive the attraction in its original form. LBVHistory presents its re-mastered ride through JII that was months in the making.

4:40p - One Little Spark: Journey into Imagination

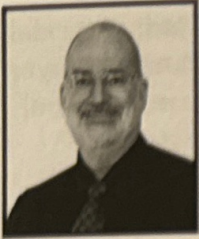
Disney Legend **Tony Baxter**, **Tom Morris**, **Russell Brower** and **Tad Stones** take you through a whimsical and imaginative journey into the creative process behind the most beloved and missed attractions.

5:50p - 6:05p - Wrap up and Finale

The LBVHS Board says goodbye as a final musical performance closes out RetroMagic EPCOT 40! We'll be back in Spring 2025 for RetroMagic: A Tencennial Celebration! (LBVHistory's 10th anniversary)



Biographies



In 1982, **Steve Alcorn** joined Walt Disney Imagineering (then known as WED Enterprises) as a consultant, where he worked on the electronic systems for Epcot Center. During his two years with Imagineering, he designed show control systems for The American Adventure, wrote the operating system used in the parkwide monitoring system, and became Imagineering's first Systems Engineer, heading up mechanical, electronic and software systems for the Journey into Imagination ride.

In 1986, he founded Alcorn McBride & Associates. The company initially concentrated on providing engineering services to the music industry, designing products for Akai, 360 Systems and Forat Electronics.

In 1988, Mr. Alcorn designed the company's first show controller, the V16, which was used in Wonders of Life at Epcot, and later became the parkwide standard throughout most of the world's theme parks. He also directed the team that developed the "Digital Binaural" multi-track audio system that is used in nearly every major theme park attraction.

He is the author of two books about the theme park industry: Building a Better Mouse (co-authored with David Green) and Theme Park Design.

Through Internet instruction provider Education To Go, Mr. Alcorn teaches online classes at 1600 universities and colleges worldwide. His classes include "Write Fiction Like A Pro", "Mystery Writing", "Writing Young Adult Fiction", "Advanced Fiction Writing", "Writing for Children", and "Publish Your Book Now". In 2001 he founded The Writing Academy, an online learning website for authors.

For aspiring Imagineers, he teaches a class in "Imagineering" at Imagineeringclass.com

He has been married to his high school sweetheart, **Linda McBride**, since 1978. They have one child, **Dani Alcorn**.



Linda Alcorn planned to work for Disney from an early age, and applied to work at WED Enterprises (now Walt Disney Imagineering) when she graduated from UCLA in 1978 with a Bachelor's Degree in Engineering. She was hired to work as a wirelister, but soon found herself in charge of show control for the World of Motion pavilion at Epcot. By the time Epcot opened she was responsible for show control in ten of the park's opening day attractions.

In 1978 she married Steve Alcorn, and was instrumental in introducing him to the theme park industry and founding Alcorn McBride.

She was recognized as part of the opening team and a recipient of the THEA Classic Award for her 1982 work on Epcot.

During her career at Imagineering she designed, redesigned, or supervised attractions at all of Walt Disney World's parks.

She designed the show control system for It's a Small World, and supervised installation of Pirates of the Caribbean show control systems at Disneyland Paris. As a Technical Director she managed the show control team at Walt Disney Imagineering Florida.

In 2014 she was a member of the team that received the THEA Award for Enchanted Tales with Belle at Disney World's Magic Kingdom.

Linda is one of the engineers featured in the book Building A Better Mouse: The Story Of The Electronic Imagineers Who Designed Epcot.

In addition to numerous performance and service awards from Walt Disney Imagineering, in 2020 She was recognized as a TEA Master by the Themed Entertainment Association. The Masters program celebrates the masters of their craft in the global visitor attractions industry.

Linda is not presenting on stage today but is happy to discuss her experiences with guests during the session breaks.



Tony Baxter grew up in Orange County, California. It was the perfect time and place for this future Imagineer—he not only witnessed the birth of the theme park industry, but he also grew up alongside his beloved Disneyland. A Disney fan from an early age, Tony especially enjoyed his weekly visits with Walt courtesy of the *Disneyland* television program. The show whetted his appetite for Walt's new wonderland rising from the Anaheim citrus groves. In his spare time he could be found building models and mocking up rides in his backyard.

He went to work scooping ice cream at Carnation Plaza Gardens in Disneyland when he turned 17½—the earliest age at which one could get hired by one of the park's lessees—and went on to other positions during the five years he spent working there. During lunch hours, he would poke around backstage. One day, while trying to get a peek at *Pirates of the Caribbean*, a chance encounter with Imagineer and Disney Legend Claude Coats led to a personal tour of the unfinished ride.

In 1970, at age 23, Tony was hired as an Imagineer, and was soon shipped off to Orlando to serve as a field art director for *20,000 Leagues Under the Sea* for the upcoming opening of the Magic Kingdom. He would remain in Florida until the end of 1971. In the following years came a string of creations that helped define the modern Disney park landscape. Tony's teams developed *Big Thunder Mountain Railroad*, the first of which opened at Disneyland in 1979. During that decade he also helped create concepts for the Seas and Land pavilions at EPCOT Center, as well as the unrealized Discovery Bay and Dumbo's Circus areas for Disneyland.

In 1983 Disneyland debuted an entirely new Fantasyland: Tony's team transformed the area into a spectacularly detailed European village with re-envisioned and enhanced attractions. That same year, the *Journey into Imagination* pavilion opened at EPCOT Center. Again led by Tony, the project resulted in one of the most timeless and beloved attractions in the Epcot roster as well as a pair of unforgettable characters—Figment and Dreamfinder.

More attractions followed. With Tony's assistance, filmmaker George Lucas was brought into the Disney fold, resulting in

innovative projects such as *Star Tours* (1987) and the groundbreaking *Indiana Jones Adventure* (1995). Childhood memories of *Song of the South*, which he saw in theatrical re-release, helped inspire *Splash Mountain* (1989)—the initial idea for which was Tony's alone. He also worked on smaller projects, such as 1987's opening of *The Disney Gallery* at Disneyland.

After serving as executive producer of Disneyland Paris (1992), Tony returned stateside and developed the concept for WESTCOT Center, a proposed futuristic theme park for Anaheim, a redesign of Tomorrowland at Disneyland (1998), and an ambitious slate of projects to enhance the park's luster for its 50th anniversary and beyond. These included the restoration of the Disneyland submarines (a sentimental favorite of Tony's) with *Finding Nemo Submarine Voyage* (2007), the re-opening of an enhanced *Sleeping Beauty Castle Walkthrough* (2008), an upgraded restoration of *Great Moments with Mr. Lincoln* (2009), *Star Tours — The Adventures Continue* (2011), and *Fantasy Faire* (2013).

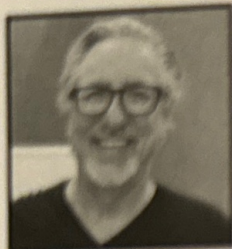
On February 1, 2013, Tony announced that he would be stepping down from his Imagineering role as senior vice president of creative development. He remains a creative advisor and mentor of a new generation of Imagineers and continues to work on new ideas and attractions combining time-tested design practices with modern technology. "I'd like to think that's one of the things I learned working at Disneyland," he once said. "The emotional side of the business. It's been my edge as I transitioned into being professionally engaged to develop these things."

Tony was inducted as a **Disney Legend** in 2013.

THE FILM COUNTER

KODAK INSTANT PRINT FILM PR10.....	\$4.99
KODAK SUPER 8 LOW LIGHT MOVIE FILM EG464.....	\$3.99
KODAK 20 EXPOSURE PRINT FILM C110-20 C126-20.....	\$1.29
KODAK KODACHROME SLIDE FILM KR110-20 KR135-20.....	\$1.99
KODAK SUPER 8 MOVIE FILM.....	\$2.99

JEWELRY DEPT.



In 1979 **Trevor Bryant** began his design career with Walt Disney Imagineering. Over the next fourteen years, he held executive roles creating EPCOT Center, Pleasure Island, Disney-MGM Studio Tour, and Euro-Disneyland. From 1984 - 1989 he held the position of Executive Director for Research and Development. From 1994 - 2000 he was Senior Vice President for Sony Development in Burbank, California, directing

the design and development of global entertainment projects. He returned to Disney in 2010 as the Creative Director and Show Producer for attractions in Florida and Shanghai, China. He retired as an executive producer in 2016. Today he follows his heart, pursuing his passion for art as a personal journey.



Russell Brower is an American music composer and three-time Emmy Award-winning sound designer who has created sounds for *Tiny Toon Adventures*, *Animaniacs* and *Batman: The Animated Series*, and video game music for genres including *Joint Operations*, *Typhoon Rising*, *World of Warcraft*, *StarCraft II*, *Doodle III* and *Sevens of Valor*. He was previously the Director of Audio/

Video for Blizzard Entertainment, the sound designer/editor at Warner Bros. Animation and DC Entertainment, the Audio Director at NovaLogic, and the Principal Media Designer and Music Director at Walt Disney Imagineering. "Invincible", from his score for *World of Warcraft: Wrath of the Lich King*, made its first appearance in the Classic FM Hall of Fame Top 300 in April 2014 at no. 52. It was Brower's first appearance in the Hall of Fame.



Scott Curtis was born in Van Nuys, California, United States. As a former child actor, he is known for his role as *Brandon Capwell* (1984-1985) on the daytime television series *Santa Barbara*. He also had a regular role on *Acorn's Way*, amongst other shows. In 1988 Curtis had the lead role in the horror film *Cameron's*

Closet. Curtis was the voice actor for the "Bazzy" character at Walt Disney World's *Crimson Command* attraction, which opened at Epcot Center in 1989. Curtis also appeared alongside *Fred Savage* in some deleted scenes in the 1989 movie *The Wizard* as "Mitchell".

Curtis has not acted since 1990, the same year he made guest appearances on episodes of *Full House* titled, "Thirteen Candles" and "Just Say No Way". Curtis credits his professional upbringing with his enthusiasm to produce music to the result of very high expectations.

Curtis has been married since 2005. A keen musician, Curtis is in the bands *The Up and Onj*, having also played with *The Greedy Kings* and *Champion*. He has produced *Lane Change* and was a member of the shadow punk band, *The Fuglies*. In December 2005, Curtis prepared with his band *RED* for a gig at Paramount Studios for New Year's Eve, Gridlock 2006 with the *Pussycat Dolls* performing at midnight and hosted by *Pamela Anderson*. Curtis now produces music in Reno as co-owner of *The 505 Recording Group*. With bands like *Sinister Scene*, *The Kanes*, *Sil Shoda*, *Full Count*, *Dimension 13* and *Broken Roots* under his belt, he is bringing recording to the musician with professionalism and at rates that are attainable on any budget. Curtis believes that bands should be able to create, and not have to invest a ridiculous amount of money to do so.



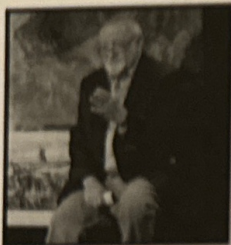
Hugh Duxley has an impressive career as an award-winning international design associate with superior creative skills, highly tuned leadership capabilities, and a solid acumen in international business.

The Walt Disney Company. As a member of Walt Disney Imagineering (Disney's WED Enterprises) Hugh was instrumental in the development of the final build-out of the *World Showcase* in EPCOT Center. Later, Hugh was tapped to apply his creative skills as Art Director for the original *Disneyland Park* in California.

Imaginative Technologies (ITEC). In 1986, Hugh began his entrepreneurial career and co-founded his own creative shop, *Imaginative Technologies*. ITEC provided "Imagineering-type" services to the new and rapidly growing world-wide *Family Entertainment* market. While serving as President of *ITEC Productions*, Hugh also co-founded *Entertainment Properties Inc.* in 1992, to design and joint venture development opportunities. ITEC's client roster included some of the biggest brands in the world including the *Hilton Nevada Corporation*, *Mirage Resorts*, *The*

Biltmore Estate, The Boston World Trade Center, NASCAR, and Caribbean Restaurant Partners.

Paramount Parks. Further expanding his creative and leadership portfolio, Hugh served in several executive level positions with Paramount Parks between 1993 and 1995, including assuming the duties of Executive vice President during the acquisition by Paramount Pictures and the subsequent merger with Viacom and Blockbuster Entertainment. Hugh was responsible for Paramount Park Corporate systems' development, including the implementation of a five year plan for all five North American parks, and the integration of all of the Intellectual Properties of Viacom's family of brands, including MTV, Nickelodeon and Blockbuster Entertainment, and Paramount Pictures Properties. This experience placed Hugh within the largest mergers in the Family Entertainment industry and led to his role as Creator and Executive Producer of "Star Trek: The Experience" with the Las Vegas Hilton.



John DeCuir Jr. practically took his first steps on a film set. Learning at the feet of his father, it was inevitable that DeCuir Jr. would become a designer. While attending college and studying architecture, he was a design intern with the five-year production of *Cleopatra*. "I am probably the only person who worked their way through college on one film," says DeCuir Jr. Through his

experience and skill, he became a distinguished production designer like his father with titles such as *Top Gun*, *Turner & Hooch*, and *Sister Act 2*. He also worked with DeCuir Sr. on *Ghostbusters* as Art Director. He went on to work as an architect and designed projects with Six Flags, NBC Universal, and Walt Disney Company's ventures. DeCuir Jr. has taught at the UCLA Performing Arts Program and USC's School of Cinema in the graduate program. He currently resides in Kentucky with his wife and is teaching classes on the art of production design at Asbury University.

 Bell & Howell 1300 Professional Movie Sound Camera Available separately or with: 1300-1000 1/2" Super 8 movie film, 1300-1000 1/2" Super 8 movie film, 1300-1000 1/2" Super 8 movie film, 1300-1000 1/2" Super 8 movie film. Show Special \$229⁹⁷	 Bell & Howell 1400 Super 8mm Movie Sound Camera Available separately or with: 1400-1000 1/2" Super 8 movie film, 1400-1000 1/2" Super 8 movie film, 1400-1000 1/2" Super 8 movie film, 1400-1000 1/2" Super 8 movie film. Show Special \$139⁹⁷
 Bell & Howell 1400 Super 8mm Movie Sound Camera Available separately or with: 1400-1000 1/2" Super 8 movie film, 1400-1000 1/2" Super 8 movie film, 1400-1000 1/2" Super 8 movie film, 1400-1000 1/2" Super 8 movie film. Show Special \$89⁹⁷	 Bell & Howell 1400 Super 8mm Movie Sound Camera Available separately or with: 1400-1000 1/2" Super 8 movie film, 1400-1000 1/2" Super 8 movie film, 1400-1000 1/2" Super 8 movie film, 1400-1000 1/2" Super 8 movie film. Show Special \$179⁹⁷



Peggie Fariss began her fifty-year career at Disney as an attractions hostess on the Storybook Land Canal Boats at Disneyland. She was instrumental in the research for EPCOT's Spaceship Earth and later became Walt Disney Imagineering's liaison to corporate sponsors. Her experience representing Imagineering's artistic vision led to her final assignment as the creative development executive for Disneyland

Paris, where for five years she led a team that doubled in size from twenty-five to fifty.



Davy Feiten has worked in feature film, television, and theme parks. He has won ten Telly awards, two iParenting awards, and two Dove awards. Davy is a seasoned animation professional who can bring work in on time, improve quality, enhance the story, and help out in all aspects of the creative team. Davy's breadth of experience includes directing, storyboarding, animation, animatronics, and puppets. Davy's professional experience in animation and story has been with Pixar, Walt Disney Imagineering, DNA, Universal, Cinesite and Rhythm & Hues. Before moving into feature films, Davy was Chief Animation Producer for Walt Disney Imagineering, overseeing all the animatronics worldwide for creative design, sculpting, manufacturing, quality and animation. Davy is currently teaching Advanced Visual Storytelling and Senior Film for Animation at California College of the Arts.



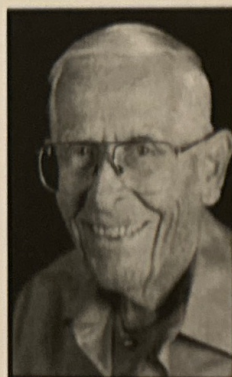
History's first big-city traffic jam is a humorous exhibit in the World of Motion show.



The longest contracted Walt Disney World Performer (40 years), **Billy Flanigan** has entertained millions from around the globe. When COVID forced the Parks to close and Performers became unemployed, Billy embarked on a 7,000-mile cycling trek, delivering "Flanigrams" to brighten days. His singing and

dancing telegrams were featured on Good Morning America, The Doctors, and in People Magazine. Billy joins us this weekend to reprise his performance during the opening ceremonies of EPCOT Center and to meet fans in the Centorium next to some of the memorabilia from EPCOT's "Barbie" show. Billy portrayed "Ken" in the show.

He was the subject of the 2022 documentary "The Happiest Man on Earth"



Bob Gurr has always been a man on the move. And, for nearly 40 years, he helped move many a happy Disney theme park guest aboard vehicles and ride conveyances of his own design. As he's often quipped, "If it moves on wheels at Disneyland, I probably designed it."

And he certainly has. Bob has developed more than 100 designs for attractions ranging from Autopia and Matterhorn Bobsleds to the Disneyland and Walt Disney World Monorails, and more.

Born in Los Angeles on October 25, 1931, young Bob was fascinated with tools, mechanical devices, and cars. He often crawled through a hole in the fence of nearby Grand Central Air Terminal in Glendale to sneak into the cockpits of idle transport airplanes, while at school he decorated his test papers with sketches of automobiles.

Later, he attended Art Center College of Design in Los Angeles on a General Motors scholarship, where he studied industrial design. Upon graduation in 1952, he was hired by Ford Motor Company, but soon purchased a rubber stamp marked "R.H. Gurr Industrial Design" and went into business for himself.

Soon after, WED Enterprises, today known as Walt Disney Imagineering, hired Bob to consult on the design of miniature cars for Autopia. Walt Disney was so impressed with Bob's knowledge and skill that he invited him to join the Imagineering family, which

then was solely dedicated to the design and construction of Disneyland.

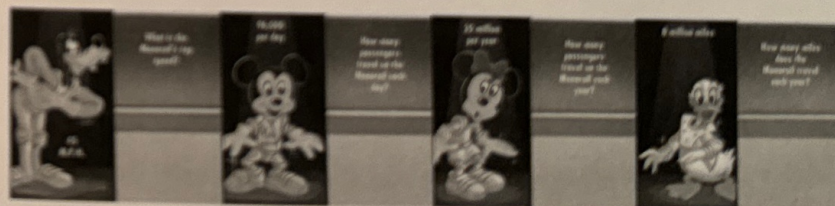
Over the next nearly four decades, Bob worked transportation magic developing the memorable Flying Saucers attraction in Tomorrowland, the antique cars and double-decker buses of Main Street, U.S.A., Ford Motor Company's Magic Skyway, which premiered at the 1964-65 New York World's Fair, and more. Bob also helped design the mechanical workings of Disney's first Audio-Animatronics® human figure, Abraham Lincoln, featured in Great Moments with Mr. Lincoln.

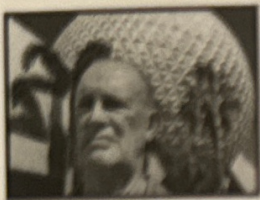
In 1981, Bob retired early from Imagineering to launch GurrDesign, Inc., and, three years later, joined creative forces with two former Imagineers to form Sequoia Creative, Inc. The firm, which specialized in "leisure-time spectaculars" and "fantastical beasts" developed King Kong and Conan's Serpent for Universal Studios, Hollywood.

Among his other mechanical feats, Bob was instrumental in creating the mysterious UFO that soared over the closing ceremonies of the 1984 Los Angeles Summer Olympic Games. He also consulted on the animated T-Rex figure featured in Steven Spielberg's motion picture Jurassic Park.

Bob continues to consult on Disney projects, including the giant Ursula creature featured at Tokyo DisneySea. In 1999, he was honored with the Themed Entertainment Association's Lifetime Achievement Award. He released his memoir, Design: Just for Fun, in 2012.

Bob continues to make mechanical magic while living his favorite philosophy, in the words of Malcolm Forbes: "While alive, live!" Bob was named a **Disney Legend** in 2004.





Bob Holland is a former project development executive and educator with thirty years of project management experience for complex hospitality, cruise ship, entertainment, health care and commercial projects. Bob started his twenty-six-year career at Disney as a field architect in the WED Resident Engineering

office during the construction of the EPCOT theme park. Later in his Disney career, Bob was an executive on the team that designed and built Disney's first two cruise ships. Other projects at Disney include resort projects at Walt Disney World, Hong Kong Disneyland and Disneyland Paris. Bob retired in 2006 as Walt Disney Imagineering Vice President for Resort Development.

After leaving Disney, Bob received an appointment as Associate Professor of Practice of Architecture and Architectural Engineering at Penn State (2006-2013). Bob led the development of the Interdisciplinary Collaborative BIM Studio, which involved students and faculty from six disciplines. This course was recognized with four national awards for its innovative approach to an interdisciplinary design studio.

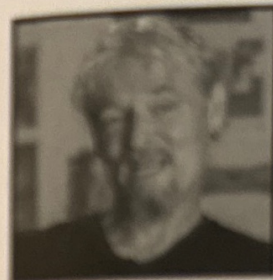
Bob graduated from Penn State with a BArch, received his MArch at Ohio State and is a retired registered architect. Bob was named a Penn State Alumni Fellow in 2016.

Working with the faculty at the University of Florida Orlando City Lab Bob helped develop the master's degree in Themed Entertainment Integration. Now mostly retired, Bob continues to teach and lecture to university and other groups. Bob joins us fresh off his transatlantic cruise with Disney Cruise Line where he was the featured speaker.



Tom Morris is a former creative development executive at Walt Disney Imagineering who guided groundbreaking projects for over 30 years. Highlight projects include the original Journey into Imagination at EPCOT Center, the conceptualization of DisneyQuest and Rock 'n' Roller Coaster Starring Aerosmith at Walt Disney World Resort, the design of Sleeping Beauty Castle at Disneyland Paris

Park, overall creative oversight for Hong Kong Disneyland Resort, and conceptual direction for Cars Land at Disney California Adventure Park at Disneyland Resort.



Jerry Rees is a prolific Director, Producer and Writer of live-action, animation, trans-media and specialty venue films as well as theme park attractions. While still in high school, Jerry mentored at Disney Studios under the wing of one of Walt Disney's legendary "Nine Old Men." Awarded a Disney Scholarship, he attended California Institute of the Arts (Cal Arts) as Teacher's Assistant for the now

famous inaugural class, featured in Vanity Fair.

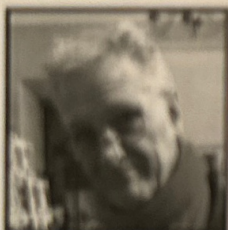
He teamed with fellow Cal Arts alum Tim Burton to co-write and co-direct the cult-classic featurettes "Doctor of Doom" and "Luau". Jerry began his career as a Disney Feature Animator, working up to Visual Effects Supervisor on "TRON". He is credited with introducing John Lasseter to Computer Animation. As a Director, Jerry's theatrical credits include "The Maccyng Man" and "The Brave Little Toaster".

Jerry has directed a record-setting 16 trans-media Disney Theme Park attractions in Anaheim, California; Orlando, Florida; Hong Kong and Paris, France. His projects span multiple formats, such as Showman, Mr. Res Digital and in-theater illusions, and include the attraction "Cinemagic" which won with a THEA Award for Best Attraction. His recent attraction, "Animation Magic" which plays aboard Disney's new cruise ships, won a THEA Award for "most innovative use of technology".

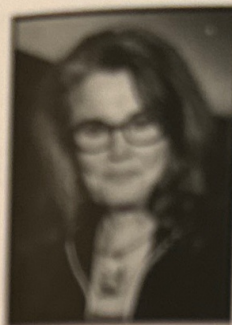
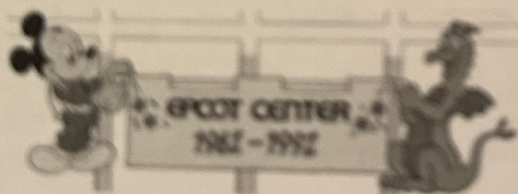
As a Producer, his credits include the Warner Bros. animated feature film "Space Jam", starring Michael Jordan, and the "Indiana Jones Stunt Spectacular", shown in the 2400-seat amphitheater at Disney's MGM Studios. As a Writer, Jerry's credits include the beloved "The Brave Little Toaster" and MGM/Zanuck's "Betty Boop". Jerry Directed the first official Augmented Reality U.S. Postage Stamp in association with Smithsonian. In 2014, he Directed all narrative media for "The Marvel Experience", a continuously traveling next-gen themed attraction covering two acres and housing stereoscopic 3-D, 4-D, motion-based and interactive content inside 7 colossal domes. An animator, sculptor and fine-artist dedicated to the use of digital technology in the service of emotion, character and storytelling. Jerry resides in Los Angeles and is a member of the Directors Guild of America (DGA) and the Writers Guild of America (WGA). He is currently serving at WDI as a PH Executive Research & Development Imagineer.



The crew welcomes back **Jim Sarno**, an artist who has been all over the entertainment industry. Jim spent some time with The Muppets, Hannah-Barbers and beyond. He moved into the Disney realm, getting his first gig with MAPO, making body parts out of fiberglass. Jim's career saw him working with legendary Disney figures like Harriet Burns, with whom he was particularly close. Jim was moved away from MAPO and joined 'The Model Shop', where he worked on the early EPCOT Center models at the time. Some of Jim's most notable projects for EPCOT were SMRT-1 and the sculpture/fountain in The Land. Jim showed his process for making SMRT-1 at our 2019 HootenMagic event. Jim designed the landing platform for Tinkerbell at Disneyland. We are pleased to have Jim with us again. He is full of stories and always generous with his time. His artwork and current projects are available at his website jimsarno.com



Animator **Ted Stones** began his career by studying with the animation pro Eric Larson, and he entered the Feature Animation program at Walt Disney studios right out of college. During his apprenticeship, Stones animated a scene in the Disney movie "The Rescuers," and he also worked in the story department on the touching Disney feature "The Fox and the Hound." After that, he worked for a on EPCOT Center's "World of Motion" pavilion for Disney World, but in 1984, he returned to animation and was a driving force behind many of the Walt Disney daytime animated shows of the late 1980s and early 1990s, most notably "Duckwing Duck," a spin-off from two episodes of "Ducktales." Stones worked as a writer on that show and also as a supervising producer, and performed similar work for the series "Chip 'n Dale Rescue Rangers." He has also been an executive producer and writer on the "Toy Story" spinoff series, "Buzz Lightyear of Star Command," and the animated spinoffs of the "Hellboy" franchise, "Hellboy Animated: Sword of Storms" and "Hellboy Animated: Blood and Iron."



Sally Stevens was born in Los Angeles, California, and attended UCLA as a music major. She has continued working in music for over fifty years, she always loved writing, and has embarked upon it more seriously in recent years.

MUSIC: Ms. Stevens traveled in concert with Ray Conniff and Nat "King" Cole, and worked as a production singer in Las Vegas with bookings in 1961 and 1983, then began to work freelance in recording and commercials in Los Angeles. She sang on the Danny Kaye Variety Show two seasons, The Carol Burnett Show and The Smothers Brothers Comedy Hour, and later on "The Love Boat", "Happy Days", "Diagnosis Murder", other TV series of the 70s and 80s and sang on commercials for popular products of the time, including Mastercard, United Airlines, Olympia Beer, Mac Donald's, Chevrolet, and many others.

Her first work as a singer in film scoring was in 1962, "How the West was Won", (composer Alfred Newman) then continuing, Doctor Zhivago (composer, Maurice Jarre) and The Sound Of Music. Solo performances in film scoring include Kluge, (composer Michael Small) "Dirty Harry" (Composer Lalo Schiffrin) "The Secret of NIMH" (composer Jerry Goldsmith), and Butch Cassidy and the Sundance Kid (Burt Bacharach, composer). During the late 1960s and 1970s, she worked extensively in records and commercials, recording as a soloist with Burt Bacharach in concert.

Stevens is the director of the Hollywood Film Chorus. She served as chorus director of the Oscars broadcasts for over 20 years, the most recent broadcast being the 2014 Academy Awards. She contracted singers and sang for the 70th Emmy Awards Broadcast and for Sturgill Simpson, Grammys Broadcast, 2014 She sings the Main Title for the Fox TV Animated shows THE SIMPSONS and FAMILY GUY, and works as needed on vocals for those shows.

Ms. Stevens has held important roles with AFTRA and SAG and remains active in their affairs. She is also a fine art photographer, and has had five solo Fine Art Black & White Photography exhibits in Los Angeles. Her 2022 memoir "I Sang That: A Memoir From Hollywood" is available now.



Tammy Tuckey is an Emmy-award winning filmmaker, actress, podcaster, and singer.

Since 2011, Tammy has hosted, edited & produced The Tiara Talk Show, a YouTube/iTunes podcast that invites the creative talent behind various Disney films, television shows and theme park attractions to discuss their experiences working for The Walt Disney

Company. In 2022, the podcast transitioned to a live YouTube chat show, The Tammy Tuckey Show (youtube.com/tammytuckey).

Past interview credits include: Susan Sarandon, Stephen Schwartz, the cast of Disney's Aladdin (Scott Weinger, Linda Larkin & Jonathan Freeman), Ed Asner, Helen Reddy, and Debbie Reynolds.

Aside from hosting The Tiara Talk Show, Tuckey is a trained singer & actress, video & audio editor, and an Emmy Award-winning filmmaker ("MORE THAN A BLANKET"). She has starred in over 20 theatrical productions, including Pippin (Grandma Berthe), Play On! (Phyllis Montague) and Beauty & the Beast (Belle).

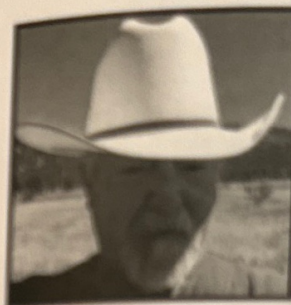
From 2016 to 2020, Tuckey hosted the bi-weekly "Unlocked!" podcast for HER Interactive, home of the Nancy Drew Computer game series.

In April 2018, Tammy produced, recorded & released her first cover album - "You'll Find Me on Main Street" - which includes song collaborations with Grammy Award-winning A cappella group, Sounds of Blackness, Mike McKee (drummer for Delta Rae), Ali Olmo, Don Liuzzi and Byron Berline.

She is recently released on her second Walt Disney World-themed cover album, "Glowing in Timeless Places," performing with the talents of Patrick Richwood, Katherine Lench Meyering, Vince Tampio, Ali Olmo, Sally Stevens, Cerino and Stu Nunnery.

She was recently seen on stage at Town and Country Players' production of "Spamalot" as Not Dead Fred in April of 2023, and will be returning to the stage at T&CP for their next production - "The Mousetrap"!

Twitter & Instagram: @TammyTuckey
Facebook: www.facebook.com/SingerTammyTuckey



Richard Vaughn is fully retired, after enjoying 40 years of theme park, attraction, exhibit, museum, retail, and live entertainment design. Work experience that involved design, production, installation and fieldwork, from concept to turnkey around the world. Seventeen years at Disney Imagineering embedded a high-functioning, project development process in him, coupled with a genuine delight in working with and leading project teams. Richard played a key role in the development of Spaceship Earth at EPCOT Center.

After the opening of EPCOT Center Richard remained at WED for the next 16 years, in both show design and concept design, was involved in a number of projects both large and small, from Captain EO to Tokyo Disneyland, Disney/MGM Studios, EuroDisney Second Gate, Blizzard Beach, and many others.

Before university and WED/WDI Richard was a carpenter, a concrete mason, a neoraboriginal mountain hippy in the Southern Oregon mountains, and now this new life is his second rodeo. He wishes his former colleagues in the themed entertainment business continue to prosper and build new and great things. "It's time for me to become Geppetto. Stop and listen..... is that a calliope?"

I've been to the Knoxville (World's) Fair and it's a rip-off. No one does something like this as well as Disney. It's beautiful, but there isn't much for children to do.

— Chris Sheehan, Rhode Island

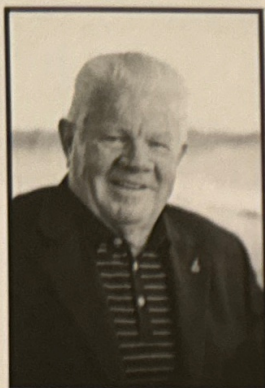
Last year, we were here for Disney's 10th anniversary and we saw the 15-minute (preview) film on Epcot. That convinced us. We canceled our trip to Hawaii and here we are. It's fantastic-plus. Plus-a-s.

— Glen Johnson, Hawthorne, Calif.

It's truly amazing but I would enjoy it much more if I didn't have to do so much walking. I didn't realize it was so big.

— Louise Simms, 68, Ocala

Our Special Friend & Guest



In 1955, twelve-year-old **Tom Nabbe** was selling newspapers at Disneyland when he began trying to convince Walt to give him a role as Tom Sawyer on Tom Sawyer Island. Tom pestered Walt until he got the job. Nearly fifty years later Tom retired, a **Disney Legend**.

You can't be Tom Sawyer forever. Eventually, you grow up. When Tom Nabbe became a little too tall, a little too deep-voiced, to continue his childhood on Tom Sawyer Island, Disney made him a ride operator. No more magazine covers for Tom. No more photos with celebrities. But

it wasn't the end of Tom Nabbe's career; it was just the beginning.

In true American fashion, Tom pulled himself up by his bootstraps and rose through the Disney ranks. He became a manager at Disneyland, was instrumental in the opening of both the Magic Kingdom and Epcot in Florida, and was tapped as part of the Disney team sent to Paris to open the theme park there.

Tom retired from Disney in 2003 after nearly 48 years with the company. He still lives in Orlando, Florida with his wife Janice, whom he married in 1968 after meeting her at Disneyland.

Tom is not appearing on stage but will be available in the Centorium and during session breaks to meet fans and autograph his memoir "Walt Hired Me".

NORWAY UNLEASHES MAELSTROM!

EPCOT CENTER—Norway, the eleventh nation of Epcot Center, has just unveiled Maelstrom, an incredible Norwegian high seas adventure—a ride that is received with wild enthusiasm by those who board it.

A Viking longboat takes guests through a time tunnel, back to the time of Leif Erikson. There they are captured in a series of episodic adventures. After an encounter with fierce trolls, the Viking boats are hurled backwards past angry polar bears and wildlife into the Arctic Sea. Next they slide down white-water rapids, teeter at the edge of a mountain waterfall and plunge into a North Sea storm before sailing into safe harbor.

At the end of the voyage, a five-



minute film gives everyone a spectacular view of Norway today, in 70mm Panavision.

ROYAL BUFFET

In addition to high seas adventures, Norway offers an exceptional show-

case of Scandinavian life and legend. Dramatic beach scenes and timber-framed cottages, the *Norwegian Sea* features presents a traditional royal buffet where guests enjoy the finest food experiences of an authentic hotel.

Unbelievable parties and Norwegian open-faced sandwiches are the popular fare at *Kristin's Restaurant*, which *Flamingo* and the *Puffin's* Royal features gifts of porcelain, glass, jewelry, wood and more.

In Norway's state church, you'll trace "One Thousand Years of Christianity" through the art and artifacts of those working people. Norway: The Gateway to Scandinavia. It's a must to experience!

Lunch Break

A 90-minute break is scheduled for you to enjoy lunch on your own. Listed below are some nearby dining options that should be open for lunch for your convenience.

EPCOT

If you have park admission (and park reservations....) you can enjoy lunch in one of the many venues of World Showcase at EPCOT utilizing the International Gateway entrance. Canada, United Kingdom, France and Morocco are closest to the entrance.

Disney's Yacht Club

Ale and Compass
Crew's Cup Lounge

The Market at Ale & Compass (Quick Service)

Disney's Beach Club

Beach Club Marketplace (Quick Service)
Beaches and Cream Soda Shop

Disney's Boardwalk

Big River Grille & Brewing Works
The Boardwalk Deli

WDW Dolphin Resort

Cabana Bar and Beach Club
Fuel (Quick Service)
Picabu
Rosa Mexicano

WDW Swan Resort

Chili
Garden Grove Café
Splash Pool Bar

While there are many other options on property you may also find a location to have UberEats, DoorDash or GrubHub deliver food.

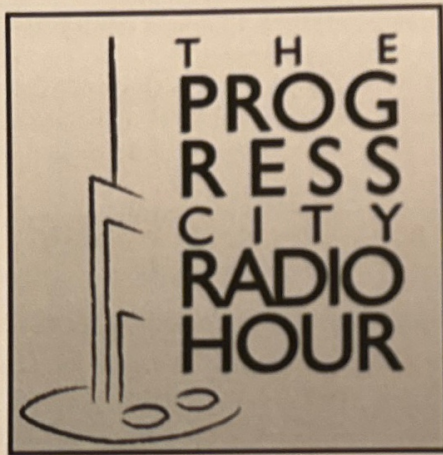
Note: Disney does not permit outside food to be consumed in the Convention Center because it is a catering venue. If you utilize delivery services please find an appropriate common area outdoors or in the resort spaces designated for that purpose to enjoy your lunch.

A Note of Thanks

We wanted to take a moment to thank Michael Crawford and Jeff Crawford for their contributions to this event. Although he could not be here today, Jeff served as musical director providing tracks and guidance for our live performances.

Michael's research has served as an inspiration to LBVHistory since our founding and we are thrilled he could help host one of our panels today.

Their monthly podcast is a terrific addition to your Disney history interests and we encourage you to subscribe.



Hosts Jeff & Michael Crawford take you through a century of Disney history, with a focus on Walt Disney and his many works. From animation to live-action film to theme parks and Imagineering and beyond, we present deep dives into our monthly topics while also interviewing fascinating individuals who have contributed to the Disney legacy. With a look to the past, and an eye to the future, hop on the monorail and join us for a great big beautiful tomorrow! Disney history, music, and more - broadcasting from beautiful downtown Progress City, U.S.A.

PODCAST AVAILABLE AT MAJOR OUTLETS
CHECK LOCAL LISTINGS

win the wdoc-tv (16)

EPCOT CENTER SENDOFF

WALT DISNEY WORLD RESORTS
EPCOT CENTER
JOURNEY TO THE CENTER OF THE WORLD

USAIR
PALACE
EPCOT CENTER

Picture a brand new world

Capture Your Memories of EPCOT Center With Kodak Disc Cameras

KODAK DISC 4000 Camera
KODAK DISC 8000 Camera

WE'VE GOT IT!
New KODACOLOR HR
DISC Film

YOU'VE GOT TO SEE IT TO BELIEVE IT! STOP IN TODAY!

Oct 23rd 8:00 PM

JOURNEY TO THE CENTER OF THE WORLD

EPCOT on TV special

Danny Kaye will host "The Grand Opening of Epcot Center," an hour-long special celebrating the inaugural of Walt Disney Productions' \$800-million Florida showplace.

"The Grand Opening of Epcot Center" will air Saturday evening, Oct. 23, at 8:00 (EST) on CBS.

Guest stars will include Drew Barrymore ("E.T.") and Roy Clark. Mario Andretti, Alex Haley, Eric Sevareid, Alan Shepard and Fernando Valenzuela are among the cameo stars.

Dwight Hemion is directing for producer Ron Miziker. Gary Smith and Hemion are the show's executive producers.

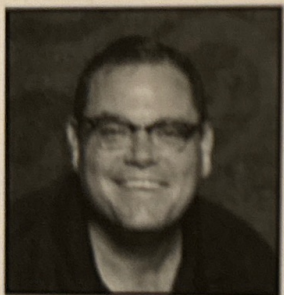
Buz Kohan is scripting the special, which will be taped in Walt Disney World in Florida.

About Us



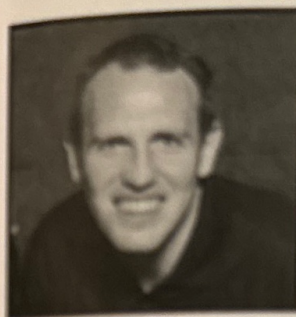
Todd McCartney kicked off his adventures in Walt Disney World in 1980 and since then it has been an ever-growing part of his life. Frequent trips as a teenager begat his self-published book "Walt Disney World Made Simple"...Todd then realized he's not one who eats, sleeps and breathes everything Disney...his focus and interest were solely in the philosophy and design behind the resort and its deep rich history.

He founded RetroWDW.com in 2012 to establish a place where artifacts and media associated with WDW could be shared and stored and spearheaded the start of the Retro Disney World podcast in 2015. As co-host of the podcast and co-founder of the Lake Buena Vista Historical Society Todd's focus is on restoring and archiving the society's collection of home films and movies as well as ensuring its financial stability. While not podcasting Todd is a Vice President of Technical Support and Services at an educational software company and fills his time with many things, not limited to traveling, general making/tinkering, pretzel baking, and model building. Todd, his wife, and his son reside in southern New Hampshire.



Brian Miles has been visiting Walt Disney World since 1988 when EPCOT Center wowed him. A lifelong resident of the Philadelphia region he is our resident expert on Presidential, food, pop culture, and other bizarre history topics that interest him. In addition to co-hosting our monthly podcast, he oversees the digitization of our vast photographic slide archives and acts as a sort of "administrator" for the various and sundry

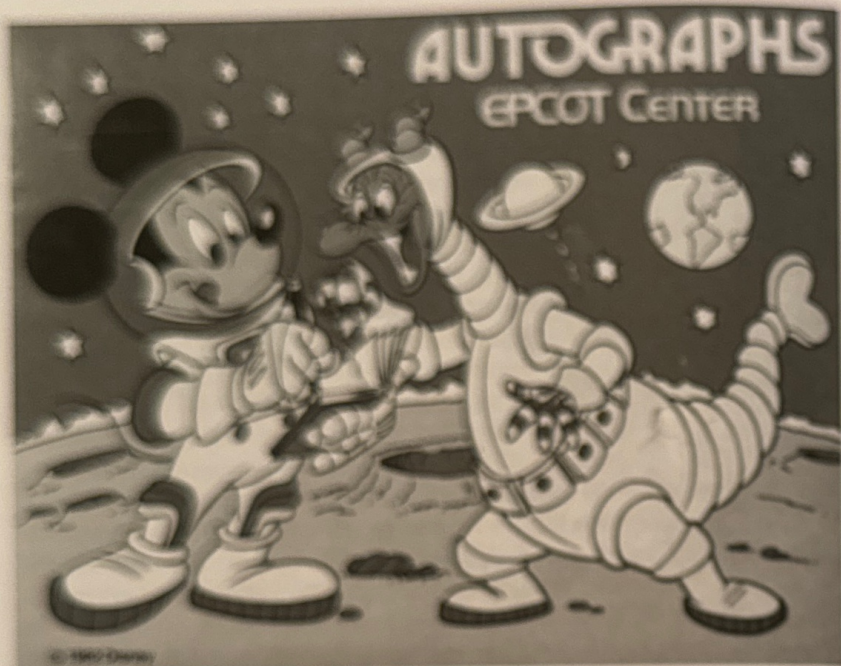
tasks associated with keeping LBVHistory's content churning. When he's not talking about "the way things used to be" he is a Senior Vice President for Human Resources and Risk Management at the medium-sized real estate development firm where he's worked for the last 20+ years.



JT Kuzior has been a fan and guest of Walt Disney World for the past thirty-five years. Living in Ohio, the journey to Florida became a yearly tradition, usually by car and in the early days, trailering a camper to Fort Wilderness. JT enjoys the unique aspects of the resort and all of the history attached to the various stories and cast members. When not discussing Disney with RetroWDW, JT enjoys nearly everything automotive. This includes his own website and YouTube Channel, Rubber City Motoring. Also, add home improvement, exercise, skiing, and movies to the mix. In recent years, his two small children have become the main priority though, and it is always an adventure. JT has been in elementary education for the past fifteen years, working with students PK-5 and continuing his education often. One of JT's primary goals for RetroWDW & LVVHS is to preserve and share all of the stories we hear before they are lost forever.



How Bowers made his first visit to the Magic Kingdom in March of 1971, taking a bus tour of the site offered to relatives of construction workers on the project. He grew up outside of Buffalo, NY, making yearly trips to Orlando's attractions, before relocating to the City Beautiful in 1979. He now lives in Saint Petersburg, Florida with his wife and family and Jimmy the dog. Outside of his Disney-focused research and writing, How cultivates a broad range of interests including cocktail making, Polynesian Pop, and writing and playing music. He also makes occasional appearances as an actor with great flair in scripted podcast dramas. How is the crowner and principal designer at JordanBowers, a design firm that specializes in UI/UX design for SAAS and mobile applications.



Guest Interaction Guidelines

All of our guests and presenters may be willing to sign autographs, take photos or converse with you. We ask that you do so in a manner respectful to the guests and other attendees.

Some presenters may choose to spend time in the Centorium area at a table for the purpose of meeting fans, signing books, etc. Others may interact less formally as they move through the ballroom during breaks.

We ask that you do not approach any of the presenters while seated at their reserved tables during any of the presentations and that you do not interrupt them while they are eating breakfast.

We pride ourselves on making our VIPs available to meet and mingle with our supporters. Your cooperation will ensure this practice continues.

Autographs and Notes

THE EPCOT TEACHER'S CENTER – A SPECIAL PLACE FOR YOU!



We would like to thank all of you who attend and support this event. A big "thank you" to our families and volunteers for their continued support! RetroMagic was a monumental task, and we hope it exceeds your expectations. Our goal is to present the kind of event we would like to attend. We look forward to seeing you our Tencennial Celebration!

Todd McCartney

How Bowers

JT Kuzior

Brian Miles